

BRUSHES AND TOOLS: PART 2

Graftobian presents the Royal S.I.L.K. line of professional brushes. Designed for intense daily professional use, SILK has been developed to exceed all expectations. Handcrafted in true Royal brush-making tradition, SILK offers class-leading performance in a simple but elegant design utilizing matte black handles and chrome-plated solid brass ferrules.



#78116 Angle Eye Blender Brush
(Fibres: goat/squirrel)



#78115 Flat Eyeliner Brush
(Fibres: synthetic)



#78114 Pointed Liner Brush
(Fibres: sable)



#78113 Crease Brush
(Fibres: dx. squirrel)



#78112 Smudger Brush
(Fibres: ultra fine goat)



#78124 Retractable Lip Brush
(Fibres: sable)



#78123 Lip Brush
(Fibres: sable)



#78122 Brow/Lash Comb
(Fibres: boar bristle)



#78121 Brow/Lash Brush
(Fibres: boar bristle/nylon spoolie)



#78120 Angle Shader Brush
(Fibres: sable)



#78119 Eyebrow Brush
(Fibres: synthetic)



#78118 Detail Liner Brush
(Fibres: sable)



#78117 Eye Detailer Brush
(Fibres: sable)



#78111 Eye Shader Medium Brush
(Fibres: sable)



#78110 Eye Shader Large Brush
(Fibres: sable)



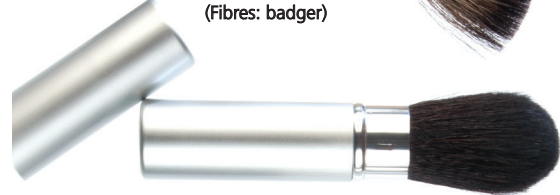
#78109 Foundation Brush
(Fibres: synthetic)



#78108 Concealer Brush
(Fibres: synthetic)



#78107 Fan Brush
(Fibres: badger)



#78106 Retractable Powder Brush
(Fibres: ultra fine goat)



#78105 Bronzer Brush
(Fibres: ultra fine goat)



#78104 Dome Powder Brush
(Fibres: ultra fine goat)



#78103 Angled Contour Brush
(Fibres: light goat)



#78102 Blush Brush
(Fibres: dx. squirrel)



#78101 Powder Brush
(Fibres: ultra fine goat)